

An Impressive Ceiling

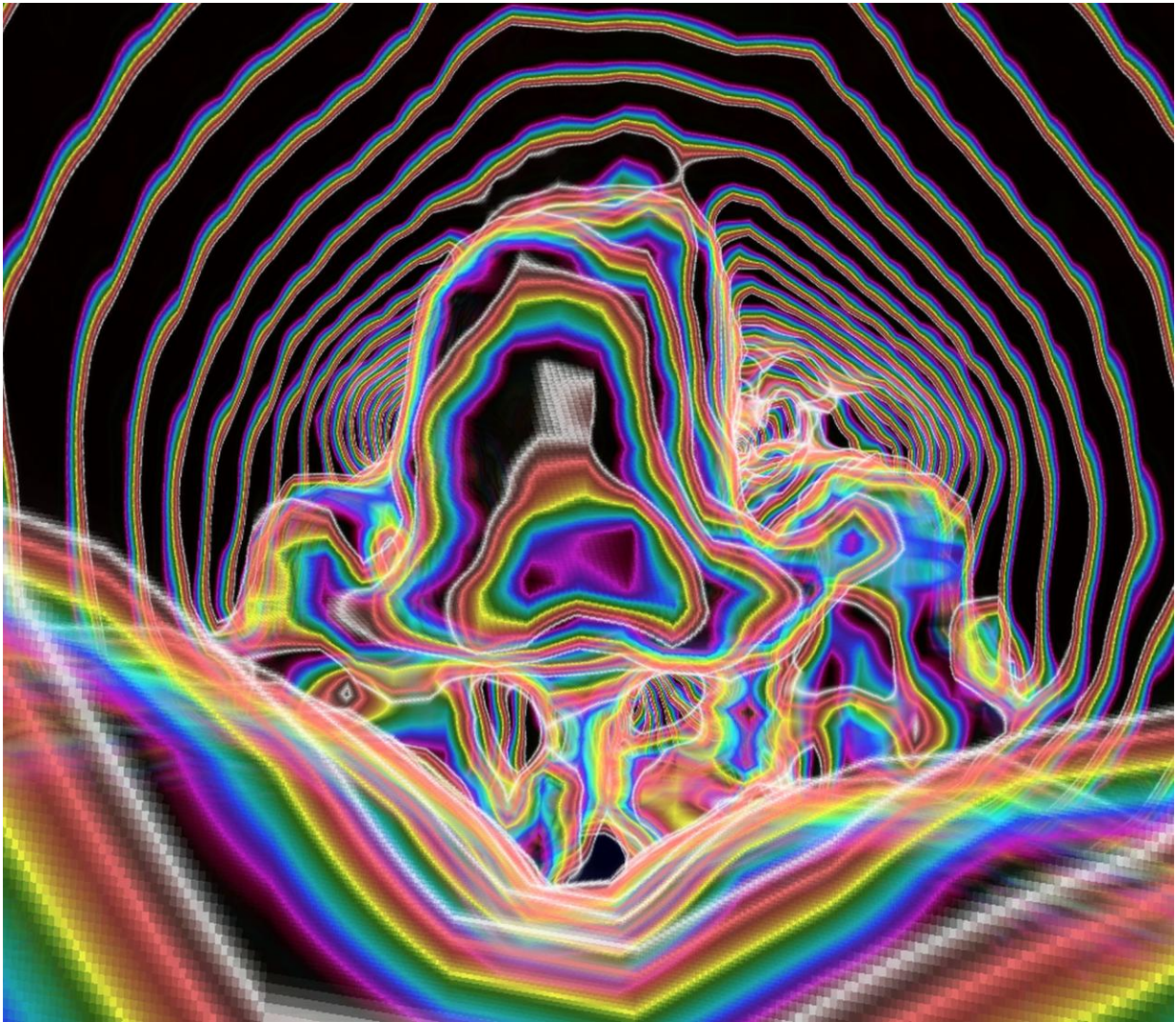
Kai-hung Fung, MBBS, FRCR

Radiology Department, Pamela Youde Nethersole Eastern Hospital, 3 Lok Man Road, Chai Wan, Hong Kong, China

✉ khfung@ha.org.hk

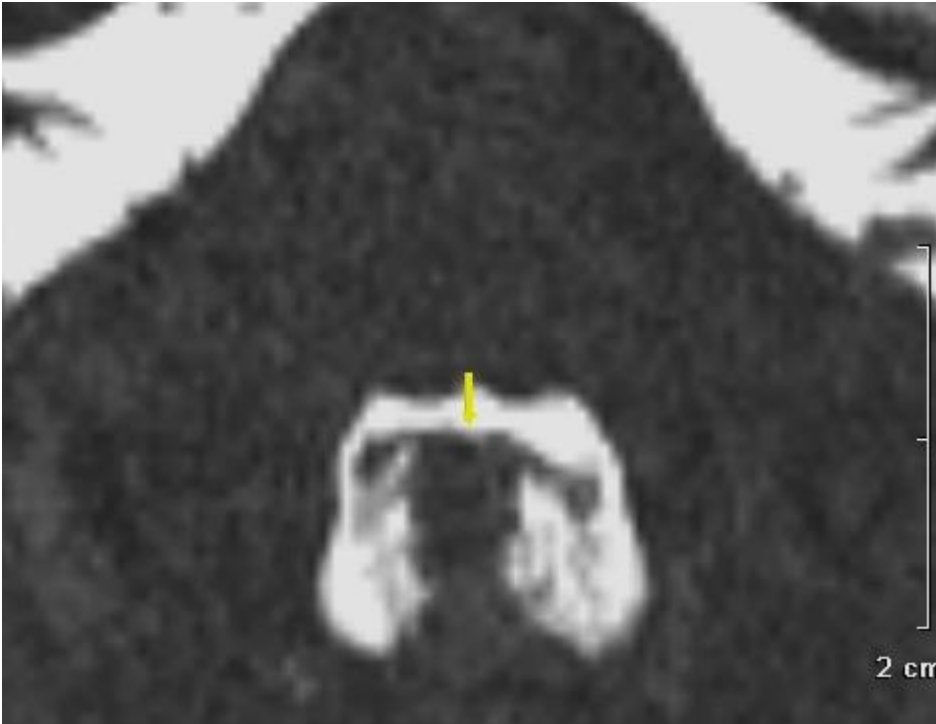
Radiology Case. 2011 Mar; 5(3):30-32 :: DOI: 10.3941/jrcr.v5i3.751

INTERESTING IMAGE

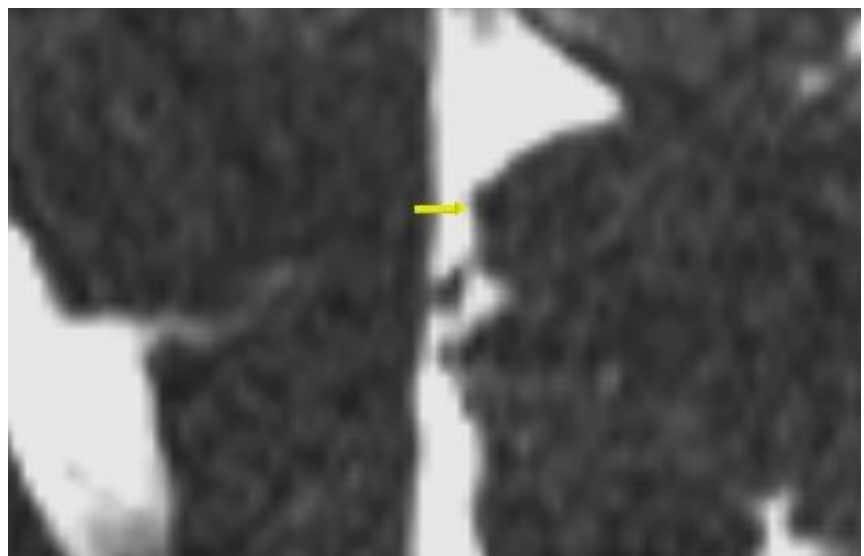


An Impressive Ceiling © Kai-hung Fung, 2011

The artwork is a virtual endoscopic view inside the 4th ventricle showing a 3D reconstructed view of the roof of the 4th ventricle. It is created from a set of MRI data acquired using 3D constructive-interference-in-steady-state (CISS) pulse sequence. The roof of the 4th ventricle (the upper half of the image in black) is made up of the superior medullary velum, white matter of the cerebellum and inferior medullary velum. It appears relatively smooth and tent-like on 3D view. The colorful structure in the centre is due to the nodule of the cerebellum (as shown by the 3D arrow in the axial and sagittal MRI views). The tela choroidea & choroid plexus of the 4th ventricle form the irregular structure behind this nodular projection, extending laterally into the lateral recess. The Foramen of Magendie is seen in midline behind this (bottom centre). The V shape structures on either side at the bottom represent the medial eminences forming the floor of the 4th ventricle and separated by the median sulcus.



Axial MRI image showing a 3D arrow pointing towards the nodule. The choroid plexus is seen as irregular structures on either side.



Sagittal MRI image showing a 3D arrow pointing towards the nodule of the cerebellum situated below the apex of the roof of the 4th ventricle (pointed white structure at the top).



Artistically rendered 3D reconstructed view of the roof of the 4th ventricle showing a 3D arrow pointing towards the nodule of the cerebellum.

URL of this article:
www.radiologycases.com/index.php/radiologycases/article/view/751

Published by EduRad



www.EduRad.org