

Party under the sea

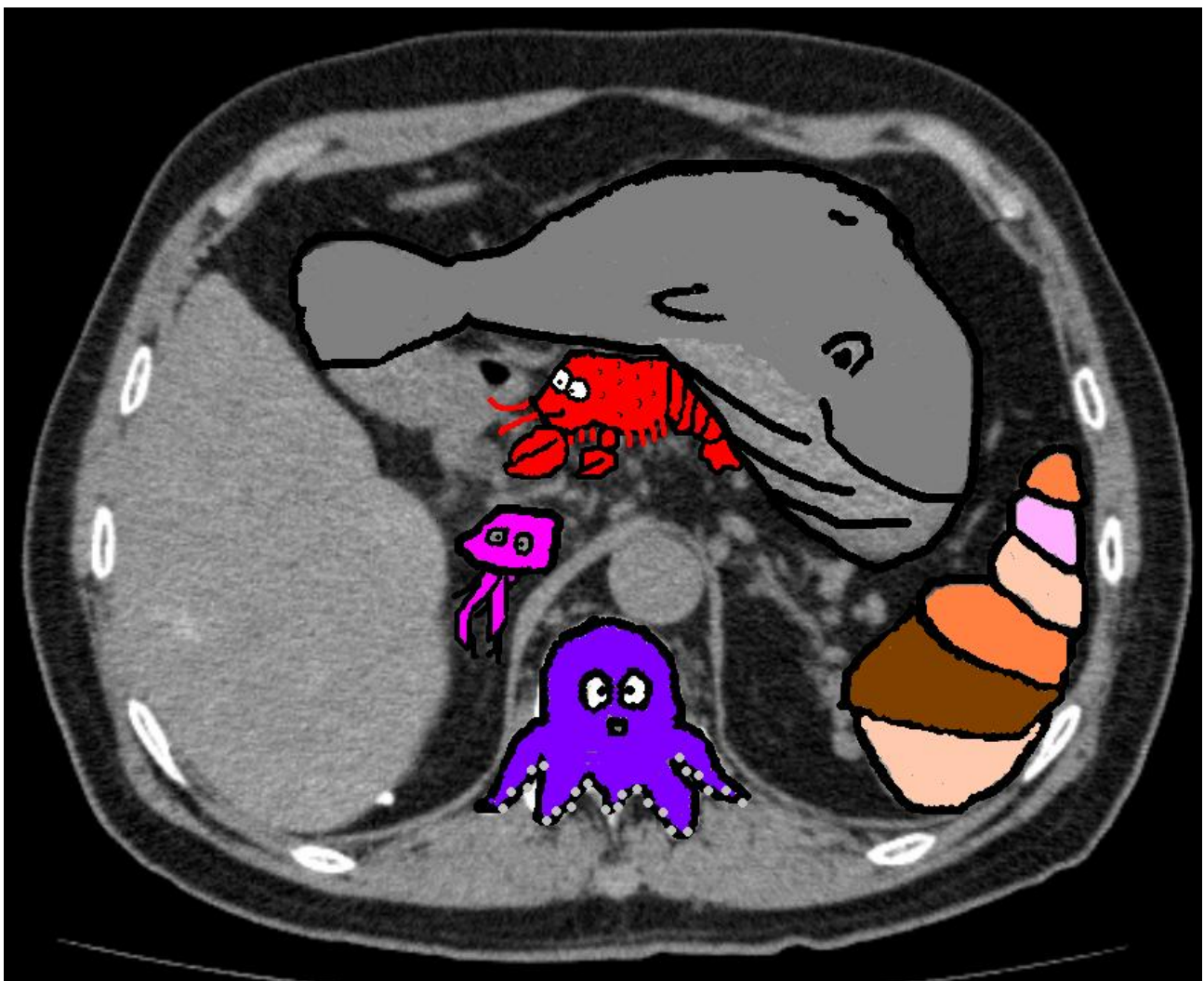
Yiu Shiobhon Luk^{1*}, Kai-hung Fung¹

1. Department of Radiology, Pamela Youde Nethersole Eastern Hospital, Hong Kong, China

* Correspondence: Yiu Shiobhon Luk, Department of Radiology, Pamela Youde Nethersole Eastern Hospital, 3 Lok Man Road, Chai Wan, Hong Kong, China
(✉ shiobhon@gmail.com)

Radiology Case. 2011 Jan; 5(1):28-29 :: DOI: 10.3941/jrcr.v5i1.703

INTERESTING IMAGE



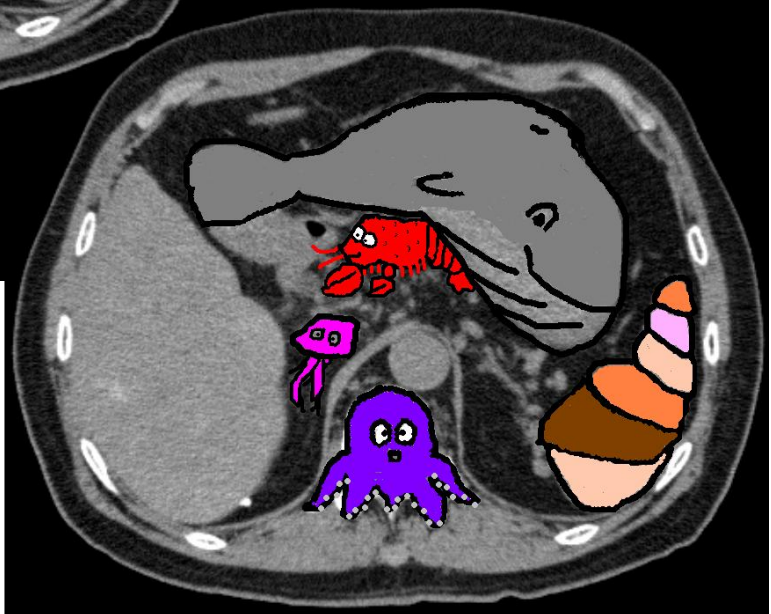
Party under the sea

A 52-year-old man presented for a computer tomographic examination of the abdomen for evaluation of liver nodules detected on previous ultrasonogram. As we read the images, we were amused to see a few sea animals having a party under the sea. A humpback whale is swimming slowly along the surface of the clear blue water. A jellyfish is floating gracefully in the water. An octopus is crawling on the ocean floor and is trying to squeeze through the narrow slit between the underwater rocks. A lobster is enjoying the warm and calm waters. A beautiful sea shell is lying on the sea shore.



Figure 2: A 52-year-old man presented for a computer tomographic examination of the abdomen for evaluation of liver nodules detected on previous ultrasonogram. As we read the images, we were amused to see a few sea animals having a party under the sea. A humpback whale is swimming slowly along the surface of the clear blue water. A jellyfish is floating gracefully in the water. An octopus is crawling on the ocean floor and is trying to squeeze through the narrow slit between the underwater rocks. A lobster is enjoying the warm and calm waters. A beautiful sea shell is lying on the sea shore.

Right image: The humpback whale is formed by the stomach. The jellyfish is formed by the inferior vena cava and the right adrenal gland. The octopus is formed by the lower thoracic vertebra and medial portion of two ribs. The body of the lobster is formed by the pancreas. Its right claw is formed by the portal vein and its left claw is formed by the common hepatic artery and left gastric artery. The sea shell is formed by the spleen.



URL of this article:
www.radiologycases.com/index.php/radiologycases/article/view/703

Published by EduRad



www.EduRad.org