

Inside the musician's brain

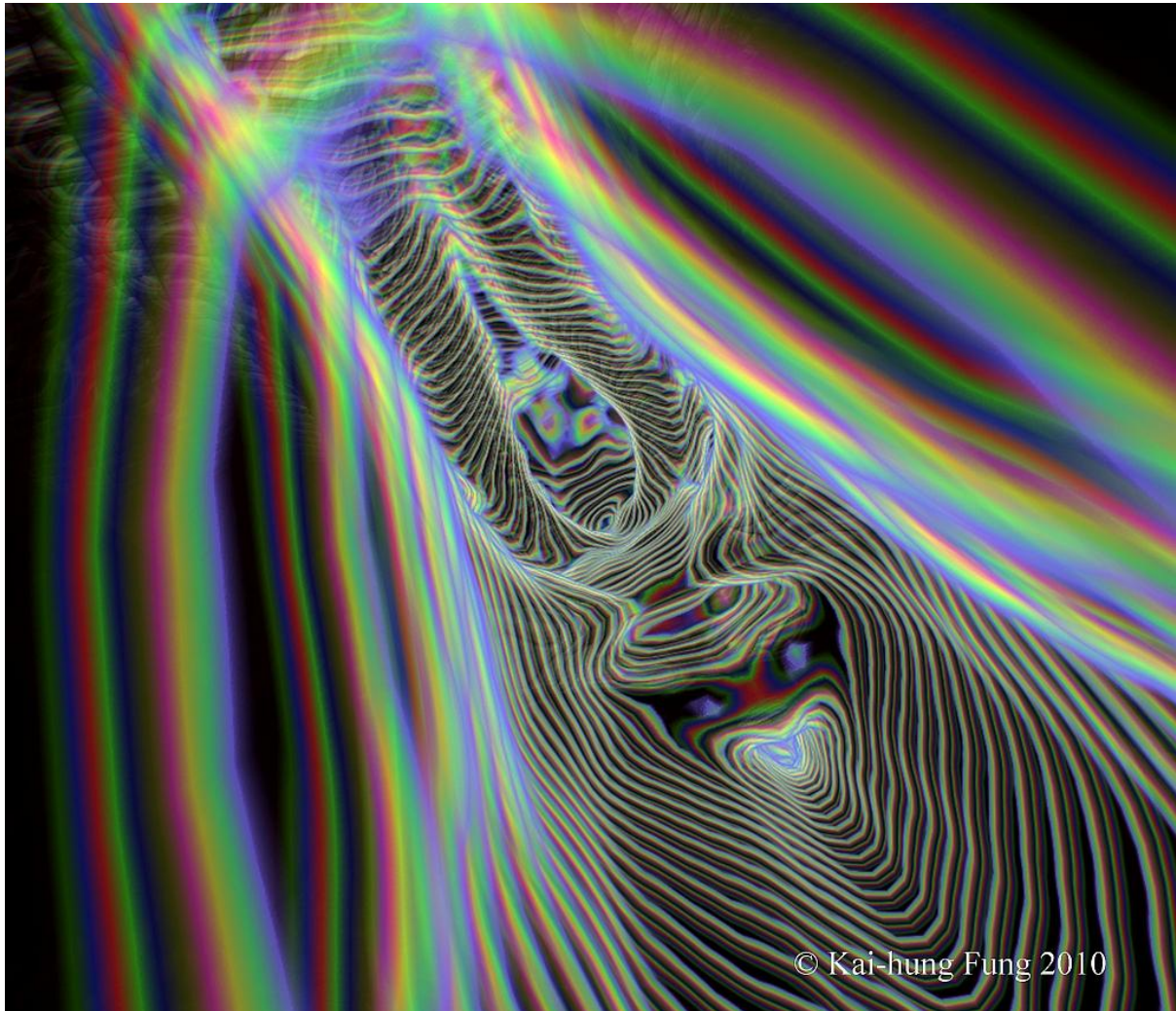
Kai-hung Fung, MBBS, FRCR

Radiology Department, Pamela Youde Nethersole Eastern Hospital, 3 Lok Man Road, Chai Wan, Hong Kong, China

✉ khfung@ha.org.hk

Radiology Case. 2010 Feb; 4(2):38-39 :: DOI: 10.3941/jrcr.v4i2.433

INTERESTING IMAGE



Inside the musician's brain © Kai-hung Fung, 2010

Artistically rendered 3D magnetic resonance imaging (MRI) showing virtual ventriculoscopia with visualization of the roof and posterior wall of the human third ventricle.

Between the thalami rendered in rainbow colors, the paired internal cerebral veins at the roof of the third ventricle resemble a pair of tuning forks. The base of the tuning fork is made up of the Habenular commissure, the pineal recess and the posterior commissure forming the posterior wall of the third ventricle. The cerebral aqueduct can be seen immediately below the colorful band-shaped posterior commissure.

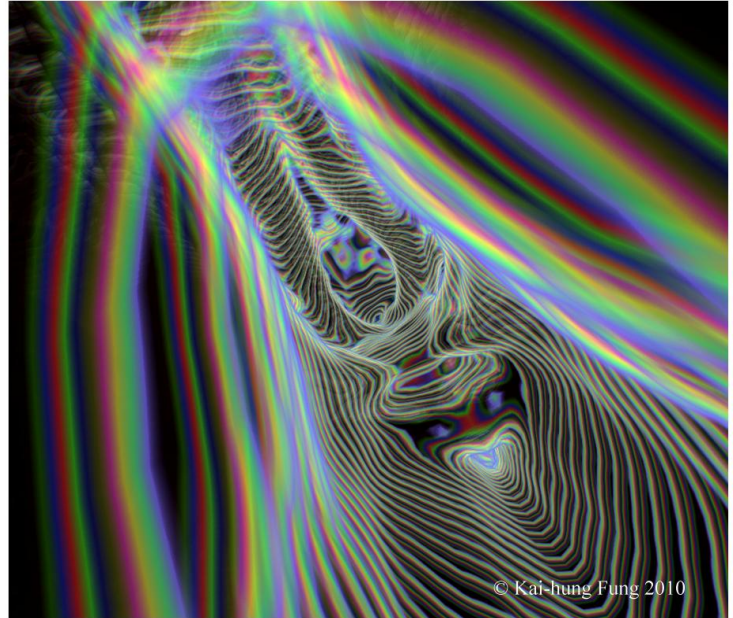
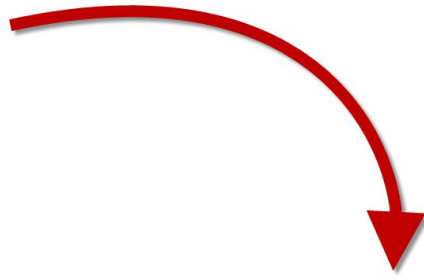
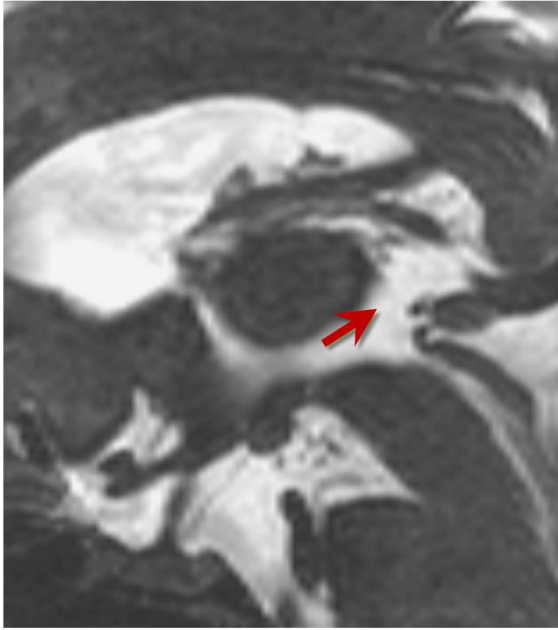


Figure 2: Original sagittal MR image employing 3D constructive interference in steady state (3D CISS) pulse sequence (top) showing the view point by the arrow.

The artistically rendered 3D magnetic resonance imaging showing virtual ventriculoscopia with visualization of the roof and posterior wall of the human third ventricle (right).

© Kai-hung Fung 2010

URL of this article:

www.radiologycases.com/index.php/radiologycases/article/view/433

Published by EduRad



www.EduRad.org