

Lacuna Skull

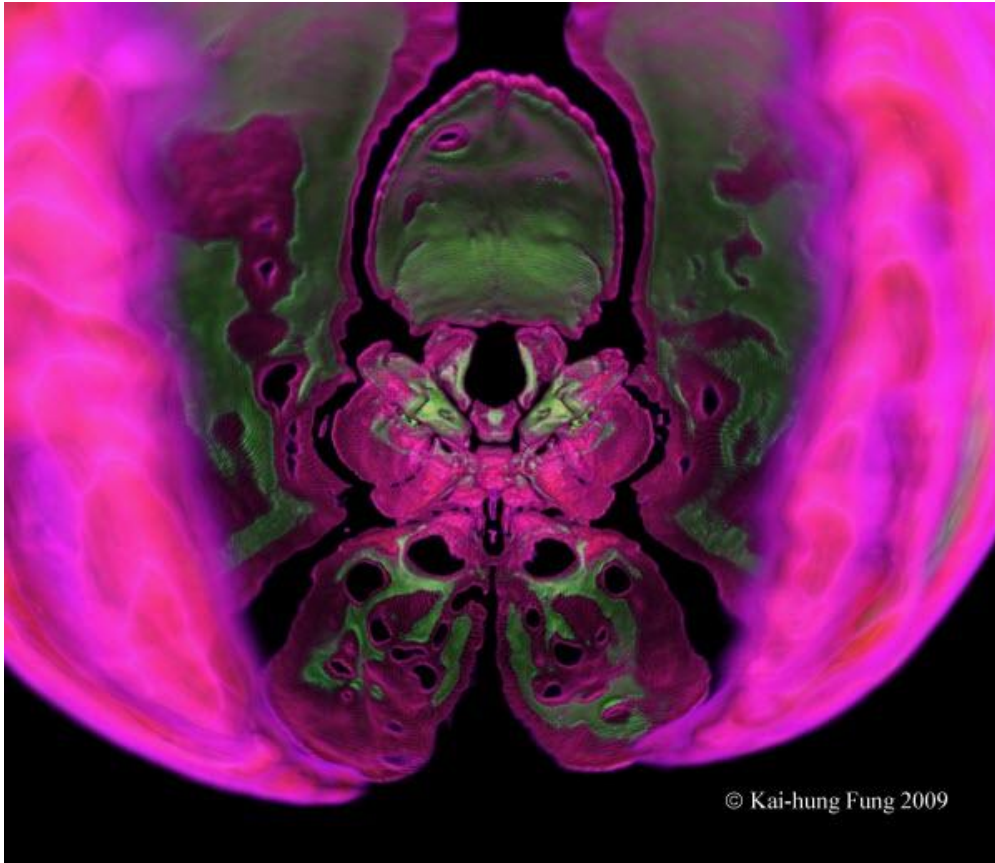
Kai-hung Fung, MBBS, FRCR

Radiology Department, Pamela Youde Nethersole Eastern Hospital, 3 Lok Man Road, Chai Wan, Hong Kong, China

✉ khfung@ha.org.hk

Radiology Case. 2009 Jun; 3(6):1-2 :: DOI: 10.3941/jrcr.v3i6.254

INTERESTING IMAGE



LACUNA SKULL © Kai-hung Fung, 2009

The male infant suffered from *E. coli* ventriculitis with hydrocephalus requiring ventriculo-peritoneal shunt. Peeping through the widely opened sagittal suture, the inner surface of the skull including the skull base can be seen. Defective bony ossifications (lacuna skull) are noted mainly in the frontal and parietal bones. The appearance of the artwork resembles an exotic orchid.

The original axial CT image is shown in figure 2 below.

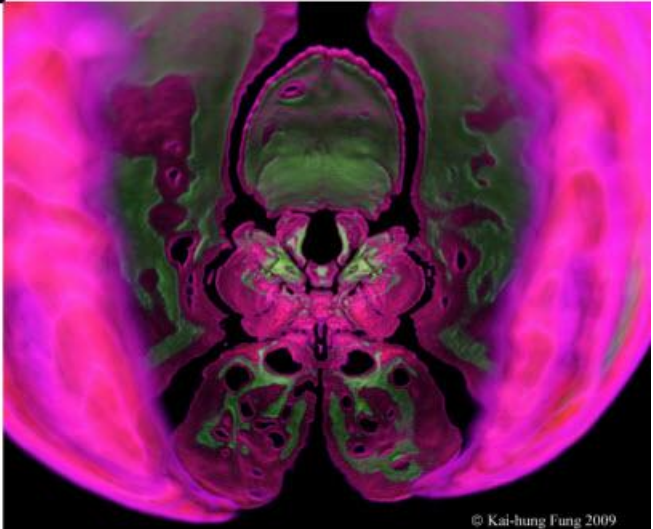
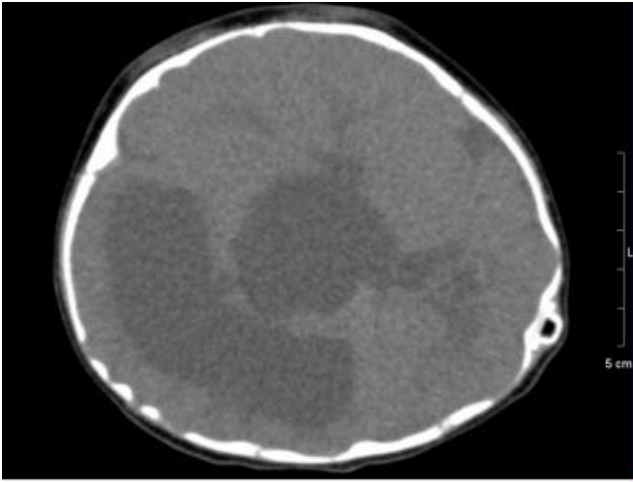


Figure 2: Axial CT scan of the skull shows defective bony ossifications (lacuna skull) mainly in the frontal and parietal bones. The artistically rendered 3D computed tomography (CT) is shown to the right, resembling the appearance of an exotic orchid.

URL of this article:
www.radiologycases.com/index.php/radiologycases/article/view/254

Published by EduRad



www.EduRad.org