

Radiology Alphabet Soup

Yiu Shiobhon Luk^{1*}, Kai-hung Fung¹

1. Department of Radiology, Pamela Youde Nethersole Eastern Hospital, Chai Wan, Hong Kong, China

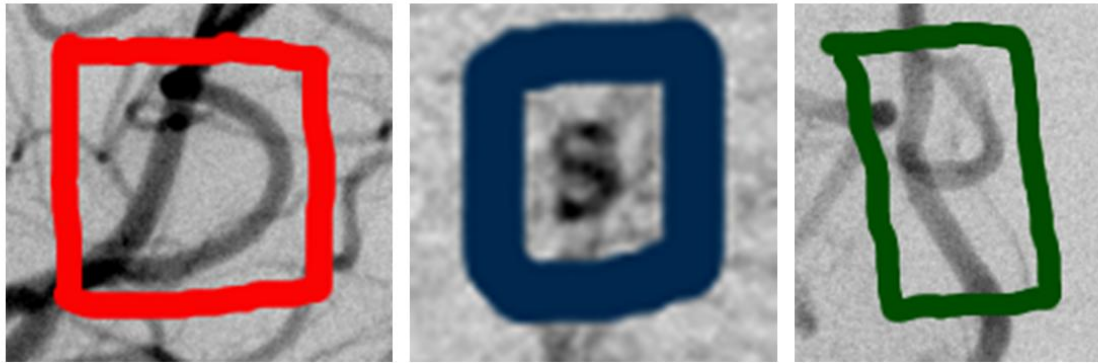
* **Correspondence:** Yiu Shiobhon Luk, Department of Radiology, Pamela Youde Nethersole Eastern Hospital, 3 Lok Man Road, Chai Wan, Hong Kong, China
(✉ shiobhon@gmail.com)

Radiology Case. 2012 Mar; 6(3):38-39 :: DOI: 10.3941/jrcr.v6i3.1022

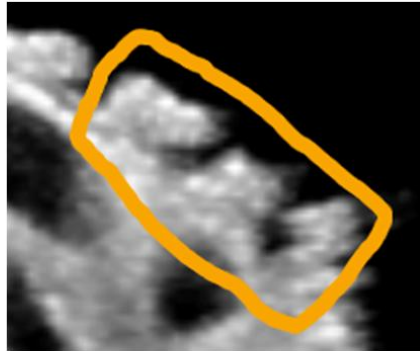
INTERESTING IMAGE

Radiology Alphabet Soup

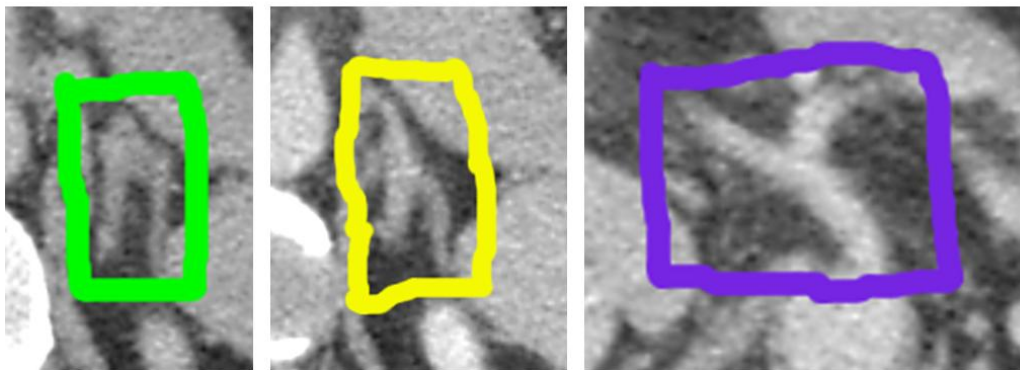
The letters of the English alphabet are everywhere if you look hard enough for them. They often reveal themselves in unexpected sites. From the cerebral angiogram, to the abdominal computed tomography and ultrasound of the urinary bladder, there are letters everywhere.



'D', 's' and 'p' in cerebral angiogram



'E' in ultrasound of the trabeculated urinary bladder wall



'n' and 'h' in adrenals, 'y' in celiac artery in computed tomography of the abdomen

URL of this article:

www.radiologycases.com/index.php/radiologycases/article/view/1022

Published by EduRad



www.EduRad.org